

for roger copland

sounds as written

david toub

4/30/05-5/11/05

$\text{♩} = 52$

alto flute

pp

alto flute

5

alto flute

9

alto flute

12

alto flute

16

alto flute

20

alto flute

21

alto flute

22

2
alto flute 23

alto flute 24

alto flute 25

alto flute 26

alto flute 27

alto flute 28

alto flute 29

alto flute 31

alto flute 34

alto flute

39

alto flute

42

alto flute

43

alto flute

44

alto flute

45

alto flute

46

alto flute

47

alto flute

48

alto flute

49

4
50
alto flute

51
alto flute

55
alto flute

58
alto flute

60
alto flute

62
alto flute

66
alto flute

69
alto flute

74
alto flute

75 alto flute 5

6

91

alto flute

91 94 97 100

97

alto flute

5:3

4:3

3:4

3:4

102

alto flute

Musical score for alto flute, measures 102-109. The notation is in treble clef with a key signature of one flat (B-flat). The melody consists of eighth and quarter notes, with some measures containing beamed eighth notes. The score ends with a double bar line and repeat dots.

103

alto flute

The musical score for the alto flute part, measures 103-112, is written on a single staff. The key signature has one flat (B-flat). The melody begins in measure 103 with a B-flat, followed by a series of eighth and sixteenth notes, including a sharp sign (F#) in measure 105. The piece concludes in measure 112 with a final B-flat note and a double bar line.

[illegible]

105

alto flute

The musical score for the alto flute part, measures 105-114, is written on a single staff. The key signature has one flat (B-flat). The melody begins in measure 105 with a B-flat, followed by a series of eighth and quarter notes. Measure 106 contains a quarter rest, a quarter note, and a half note. Measure 107 features a quarter note, a quarter rest, and a half note. Measure 108 has a quarter note, a quarter rest, and a half note. Measure 109 contains a quarter note, a quarter rest, and a half note. Measure 110 has a quarter note, a quarter rest, and a half note. Measure 111 features a quarter note, a quarter rest, and a half note. Measure 112 contains a quarter note, a quarter rest, and a half note. Measure 113 has a quarter note, a quarter rest, and a half note. Measure 114 ends with a quarter note and a quarter rest.

106

alto flute

This musical score for alto flute spans measures 106 to 115. The key signature has one sharp (F#) and one flat (Bb). The melody begins in measure 106 with a half note F#4, followed by a half note Bb4 in measure 107. Measures 108 and 109 contain eighth notes: F#4, G4, A4, Bb4, A4, G4, F#4, and E4. Measures 110 and 111 contain eighth notes: D4, C4, Bb3, A3, G3, F#3, E3, and D3. Measures 112 and 113 contain eighth notes: C3, Bb2, A2, G2, F#2, E2, D2, and C2. Measures 114 and 115 contain eighth notes: Bb1, A1, G1, F#1, E1, D1, C1, and Bb0. The score includes a treble clef and a key signature of one sharp and one flat.

[illegible]

alto flute

108

109 *alto flute* 7

109

alto flute

7

110 *alto flute*

110

alto flute

111 *alto flute*

111

alto flute

112 *alto flute*

112

alto flute

113 *alto flute*

113

alto flute

114 *alto flute*

114

alto flute

115 *alto flute*

115

alto flute

116 *alto flute*

116

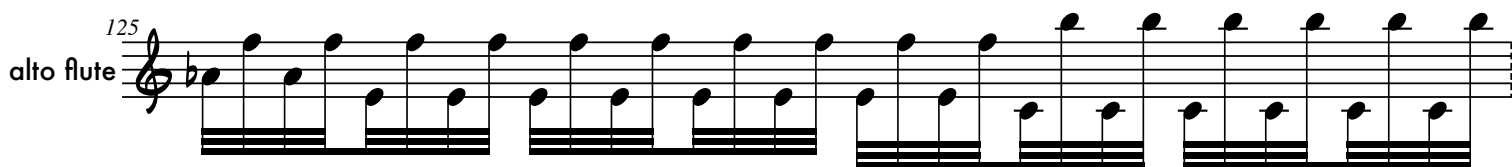
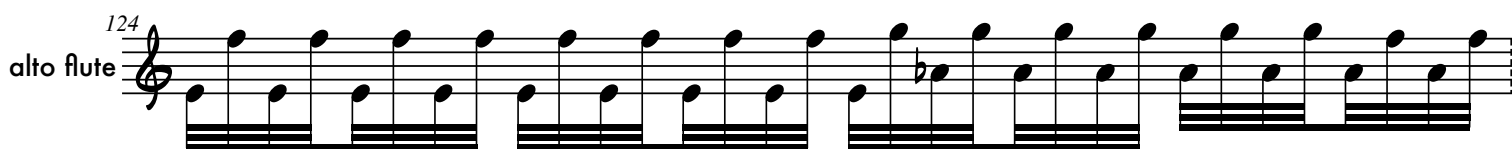
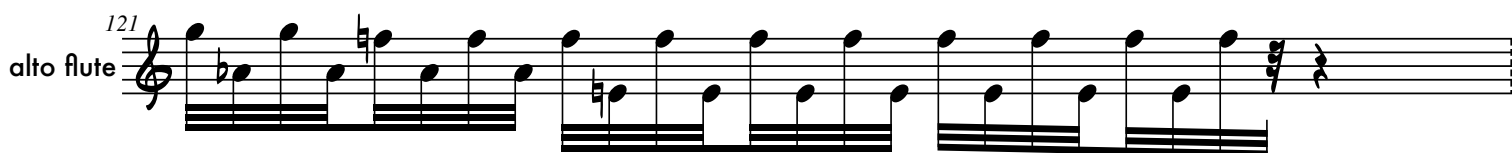
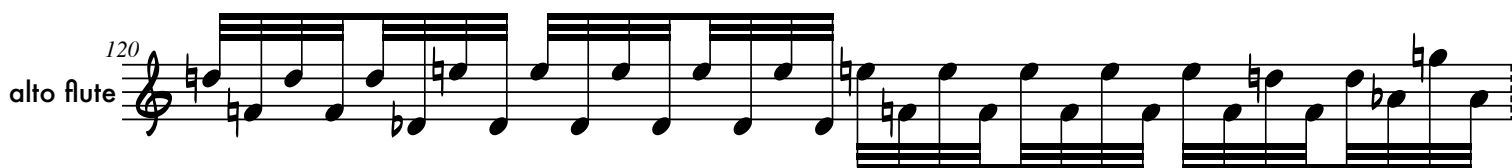
alto flute

117 *alto flute*

117

alto flute

8



127
alto flute

128
alto flute

132
alto flute

137
alto flute

141
alto flute

147
alto flute

151
alto flute

152
alto flute

153
alto flute

10

154

alto flute

10

154

alto flute

154

alto flute

The musical score for the alto flute part, measures 154-163, is written on a single staff. The key signature has one flat (B-flat). The melody consists of eighth and quarter notes, with a B-flat in measure 154 and another B-flat in measure 163. The notes are: 154: B4, A4, G4, F4; 155: E4, D4, C4, B3; 156: A3, G3, F3, E3; 157: D3, C3, B2, A2; 158: G2, F2, E2, D2; 159: C2, B1, A1, G1; 160: F1, E1, D1, C1; 161: B0, A0, G0, F0; 162: E0, D0, C0, B0; 163: A0, G0, F0, E0. The staff ends with a double bar line and repeat dots.

[illegible]

155

alto flute

The musical score for the alto flute part, measures 155-164, is as follows:

| Measure | Alto Flute (Treble Clef) | Bass Line (Bass Clef) |
|---------|--|--|
| 155 | B4 (quarter), C5 (quarter), D5 (quarter), E5 (quarter), F5 (quarter), G5 (quarter), A5 (quarter), B5 (quarter) | B3 (quarter), C4 (quarter), D4 (quarter), E4 (quarter), F4 (quarter), G4 (quarter), A4 (quarter), B4 (quarter) |
| 156 | B5 (quarter), C6 (quarter), D6 (quarter), E6 (quarter), F6 (quarter), G6 (quarter), A6 (quarter), B6 (quarter) | B4 (quarter), C5 (quarter), D5 (quarter), E5 (quarter), F5 (quarter), G5 (quarter), A5 (quarter), B5 (quarter) |
| 157 | B6 (quarter), C7 (quarter), D7 (quarter), E7 (quarter), F7 (quarter), G7 (quarter), A7 (quarter), B7 (quarter) | B5 (quarter), C6 (quarter), D6 (quarter), E6 (quarter), F6 (quarter), G6 (quarter), A6 (quarter), B6 (quarter) |
| 158 | B7 (quarter), C8 (quarter), D8 (quarter), E8 (quarter), F8 (quarter), G8 (quarter), A8 (quarter), B8 (quarter) | B6 (quarter), C7 (quarter), D7 (quarter), E7 (quarter), F7 (quarter), G7 (quarter), A7 (quarter), B7 (quarter) |
| 159 | B8 (quarter), C9 (quarter), D9 (quarter), E9 (quarter), F9 (quarter), G9 (quarter), A9 (quarter), B9 (quarter) | B7 (quarter), C8 (quarter), D8 (quarter), E8 (quarter), F8 (quarter), G8 (quarter), A8 (quarter), B8 (quarter) |
| 160 | B9 (quarter), C10 (quarter), D10 (quarter), E10 (quarter), F10 (quarter), G10 (quarter), A10 (quarter), B10 (quarter) | B8 (quarter), C9 (quarter), D9 (quarter), E9 (quarter), F9 (quarter), G9 (quarter), A9 (quarter), B9 (quarter) |
| 161 | B10 (quarter), C11 (quarter), D11 (quarter), E11 (quarter), F11 (quarter), G11 (quarter), A11 (quarter), B11 (quarter) | B9 (quarter), C10 (quarter), D10 (quarter), E10 (quarter), F10 (quarter), G10 (quarter), A10 (quarter), B10 (quarter) |
| 162 | B11 (quarter), C12 (quarter), D12 (quarter), E12 (quarter), F12 (quarter), G12 (quarter), A12 (quarter), B12 (quarter) | B10 (quarter), C11 (quarter), D11 (quarter), E11 (quarter), F11 (quarter), G11 (quarter), A11 (quarter), B11 (quarter) |
| 163 | B12 (quarter), C13 (quarter), D13 (quarter), E13 (quarter), F13 (quarter), G13 (quarter), A13 (quarter), B13 (quarter) | B11 (quarter), C12 (quarter), D12 (quarter), E12 (quarter), F12 (quarter), G12 (quarter), A12 (quarter), B12 (quarter) |
| 164 | B13 (quarter), C14 (quarter), D14 (quarter), E14 (quarter), F14 (quarter), G14 (quarter), A14 (quarter), B14 (quarter) | B12 (quarter), C13 (quarter), D13 (quarter), E13 (quarter), F13 (quarter), G13 (quarter), A13 (quarter), B13 (quarter) |

155

alto flute

The musical score for the alto flute part, measures 155-164, is as follows:

| Measure | Alto Flute (Treble Clef) | Bass Line (Bass Clef) |
|---------|--|--|
| 155 | B4 (quarter), C5 (quarter), D5 (quarter), E5 (quarter), F5 (quarter), G5 (quarter), A5 (quarter), B5 (quarter) | B3 (quarter), C4 (quarter), D4 (quarter), E4 (quarter), F4 (quarter), G4 (quarter), A4 (quarter), B4 (quarter) |
| 156 | B5 (quarter), C6 (quarter), D6 (quarter), E6 (quarter), F6 (quarter), G6 (quarter), A6 (quarter), B6 (quarter) | B4 (quarter), C5 (quarter), D5 (quarter), E5 (quarter), F5 (quarter), G5 (quarter), A5 (quarter), B5 (quarter) |
| 157 | B6 (quarter), C7 (quarter), D7 (quarter), E7 (quarter), F7 (quarter), G7 (quarter), A7 (quarter), B7 (quarter) | B5 (quarter), C6 (quarter), D6 (quarter), E6 (quarter), F6 (quarter), G6 (quarter), A6 (quarter), B6 (quarter) |
| 158 | B7 (quarter), C8 (quarter), D8 (quarter), E8 (quarter), F8 (quarter), G8 (quarter), A8 (quarter), B8 (quarter) | B6 (quarter), C7 (quarter), D7 (quarter), E7 (quarter), F7 (quarter), G7 (quarter), A7 (quarter), B7 (quarter) |
| 159 | B8 (quarter), C9 (quarter), D9 (quarter), E9 (quarter), F9 (quarter), G9 (quarter), A9 (quarter), B9 (quarter) | B7 (quarter), C8 (quarter), D8 (quarter), E8 (quarter), F8 (quarter), G8 (quarter), A8 (quarter), B8 (quarter) |
| 160 | B9 (quarter), C10 (quarter), D10 (quarter), E10 (quarter), F10 (quarter), G10 (quarter), A10 (quarter), B10 (quarter) | B8 (quarter), C9 (quarter), D9 (quarter), E9 (quarter), F9 (quarter), G9 (quarter), A9 (quarter), B9 (quarter) |
| 161 | B10 (quarter), C11 (quarter), D11 (quarter), E11 (quarter), F11 (quarter), G11 (quarter), A11 (quarter), B11 (quarter) | B9 (quarter), C10 (quarter), D10 (quarter), E10 (quarter), F10 (quarter), G10 (quarter), A10 (quarter), B10 (quarter) |
| 162 | B11 (quarter), C12 (quarter), D12 (quarter), E12 (quarter), F12 (quarter), G12 (quarter), A12 (quarter), B12 (quarter) | B10 (quarter), C11 (quarter), D11 (quarter), E11 (quarter), F11 (quarter), G11 (quarter), A11 (quarter), B11 (quarter) |
| 163 | B12 (quarter), C13 (quarter), D13 (quarter), E13 (quarter), F13 (quarter), G13 (quarter), A13 (quarter), B13 (quarter) | B11 (quarter), C12 (quarter), D12 (quarter), E12 (quarter), F12 (quarter), G12 (quarter), A12 (quarter), B12 (quarter) |
| 164 | B13 (quarter), C14 (quarter), D14 (quarter), E14 (quarter), F14 (quarter), G14 (quarter), A14 (quarter), B14 (quarter) | B12 (quarter), C13 (quarter), D13 (quarter), E13 (quarter), F13 (quarter), G13 (quarter), A13 (quarter), B13 (quarter) |

[illegible][illegible]

157

alto flute

This musical score for the alto flute spans measures 157 to 166. The notation is written on a single staff with a treble clef and a key signature of one flat (B-flat). The melody is characterized by a series of eighth-note runs, often beamed in groups of four. In measures 157-160, the melody is primarily on the upper staff, with a B-flat note in the first measure of each of these four measures. In measures 161-166, the melody continues on the upper staff, while the lower staff provides a harmonic accompaniment consisting of sustained eighth notes, also featuring a B-flat in the first measure of each of these measures. The piece concludes with a double bar line at the end of measure 166.

157

alto flute

This musical score for the alto flute spans measures 157 to 166. The notation is written on a single staff with a treble clef and a key signature of one flat (B-flat). The melody is characterized by a series of eighth-note runs, often beamed in groups of four. In measures 157-160, the melody is primarily on the upper staff, with a B-flat note in the first measure of each of these four measures. In measures 161-166, the melody continues on the upper staff, while the lower staff provides a harmonic accompaniment consisting of sustained eighth notes, also featuring a B-flat in the first measure of each of these measures. The piece concludes with a double bar line at the end of measure 166.

158

alto flute

This musical score for alto flute spans measures 158 to 167. The notation is written on a single staff with a treble clef and a key signature of one flat (B-flat). The melody consists of eighth and sixteenth notes, with some measures containing beamed sixteenth notes. The piece concludes with a double bar line and repeat dots at the end of measure 167.

158

alto flute

This musical score for alto flute spans measures 158 to 167. The notation is written on a single staff with a treble clef and a key signature of one flat (B-flat). The melody consists of eighth and sixteenth notes, with some measures containing beamed sixteenth notes. The piece concludes with a double bar line and repeat dots at the end of measure 167.

159

alto flute

This musical score for alto flute spans measures 159 to 168. The notation is on a single staff with a treble clef and a key signature of one flat (B-flat). The melody consists of eighth and quarter notes, with some measures containing beamed eighth notes. The piece concludes with a double bar line and repeat dots at the end of measure 168.

159

alto flute

This musical score for alto flute spans measures 159 to 168. The notation is on a single staff with a treble clef and a key signature of one flat (B-flat). The melody consists of eighth and quarter notes, with some measures containing beamed eighth notes. The piece concludes with a double bar line and repeat dots at the end of measure 168.

alto flute



160

alto flute



160

161

alto flute

This musical score for alto flute spans measures 161 to 170. The key signature has one flat (B-flat). The melody in the upper staff consists of eighth and quarter notes, with a B-flat in measure 165. The lower staff provides a harmonic accompaniment with chords and single notes, including a B-flat in measure 165. The piece concludes with a double bar line in measure 170.

161

alto flute

This musical score for alto flute spans measures 161 to 170. The key signature has one flat (B-flat). The melody in the upper staff consists of eighth and quarter notes, with a B-flat in measure 165. The lower staff provides a harmonic accompaniment with chords and single notes, including a B-flat in measure 165. The piece concludes with a double bar line in measure 170.

162

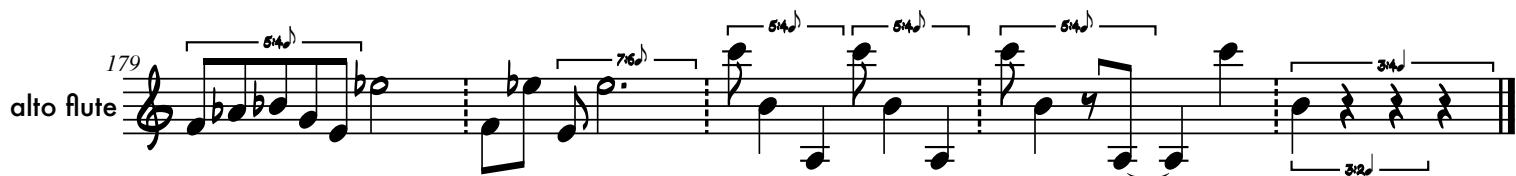
alto flute

The musical score for the alto flute part, measures 162-171, is written on a single staff. The key signature has one flat (B-flat). The melody consists of eighth and quarter notes, with some measures containing beamed sixteenth notes. The bass line is represented by a single line of eighth notes. The piece concludes with a double bar line and repeat dots.

162

alto flute

The musical score for the alto flute part, measures 162-171, is written on a single staff. The key signature has one flat (B-flat). The melody consists of eighth and quarter notes, with some measures containing beamed eighth notes. The bass line is represented by a single line of eighth notes below the staff. The piece concludes with a double bar line and repeat dots.



wyncote PA
4/30/05-5/11/05